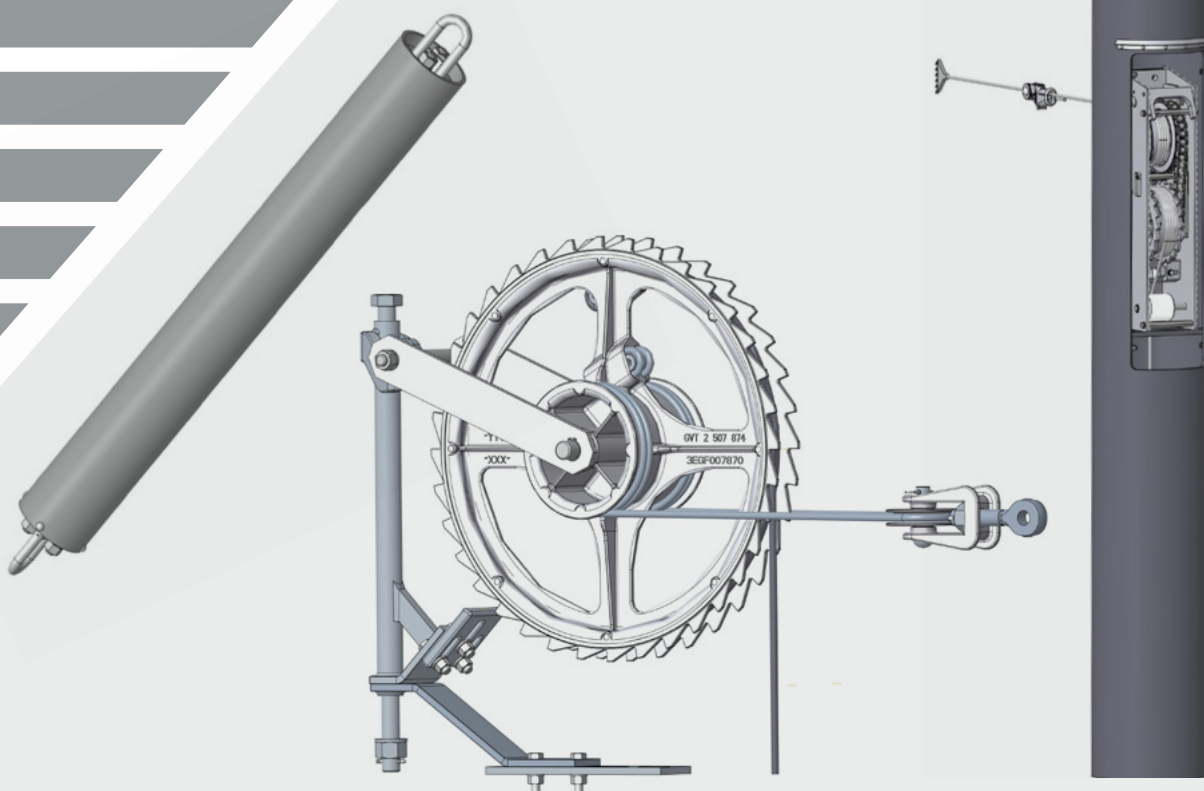


TracFeed® NSV

TENSIONING DEVICE FOR LOCAL AND INTERCITY TRANSPORT

English



TracFeed® NSV TENSIONING DEVICES

Our passion: consistent, project and solution-oriented development, testing and production of components for all areas of railway applications, resulting in “turnkey” contact line systems.

When the lengths of the catenary wire and contact wire alter due to temperature fluctuations, the tensioning devices with TracFeed® NSV tensioning devices keep the tensile forces in the contact line as constant as possible, which keeps the sag of the contact wire as consistent as possible.

The TracFeed® NSV tensioning devices developed by Rail Power Systems offer the ideal design for all ambient conditions and customer requirements.

Three types of TracFeed® NSV tensioning devices are available for selection depending on requirements of the installation location, the tensioning forces, and the elongation change to be compensated.

Design portfolio:

- TracFeed®NSV tensioning wheel assembly
- TracFeed®NSV spring tensioning mechanism
- TracFeed®NSV integrated tensioning wheel assembly

TracFeed® NSV tensioning wheel assembly

- Ambient temperature -40°C – 60°C
- Elongation compensation up to 2 m
- Tensioning force up to 30 kN

TracFeed® NSV integrated tensioning wheel assembly

- Ambient temperature -40°C – 60°C
- Elongation compensation up to 1,2 m
- Tensioning force up to 10 kN

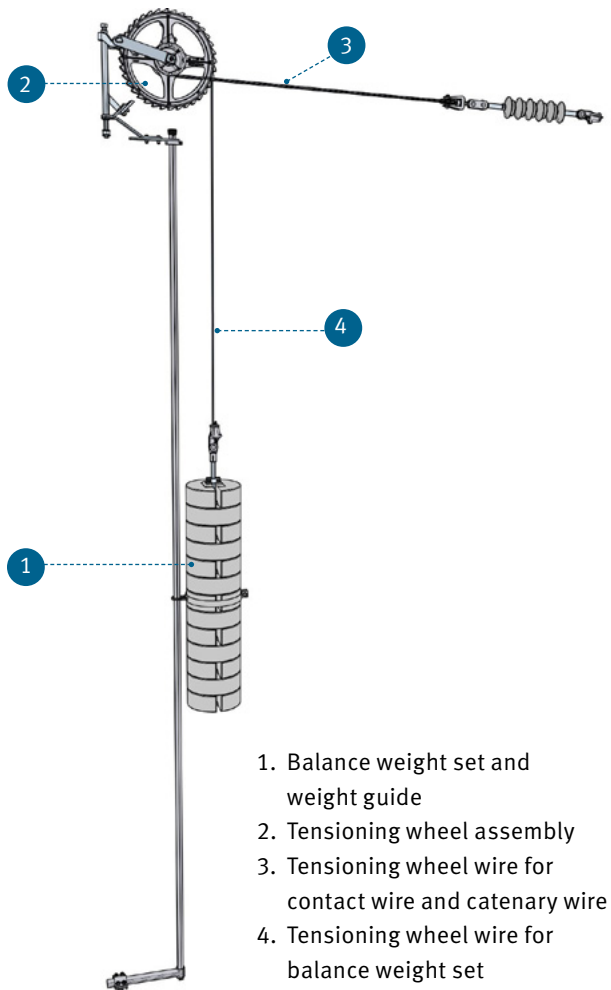
TracFeed® NSV spring tensioning mechanism

- Ambient temperature -40°C – 60°C
- Elongation compensation up to 300 mm
- Tensioning force up to 6 kN



DESIGN AND OVERVIEW – BASIC COMPONENTS OF THE TracFeed® NSV TENSIONING WHEEL ASSEMBLY

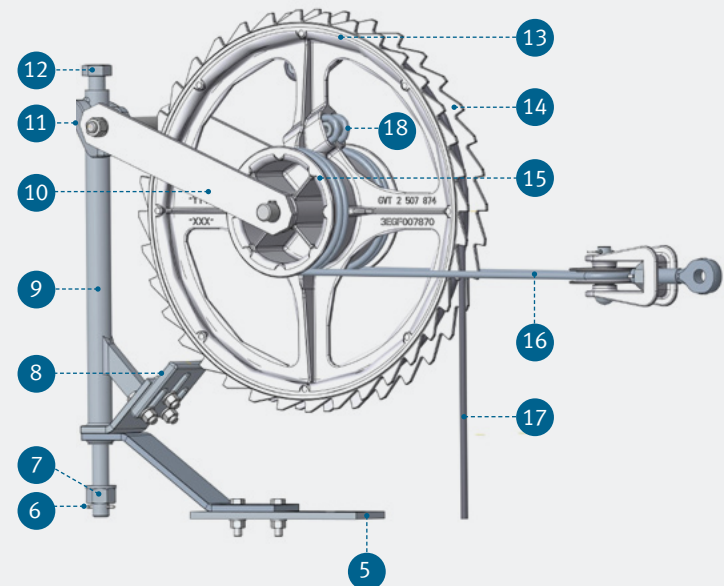
Overview of tensioning devices with TracFeed® NSV tensioning wheel assembly



TracFeed® NSV tensioning wheel assembly variants

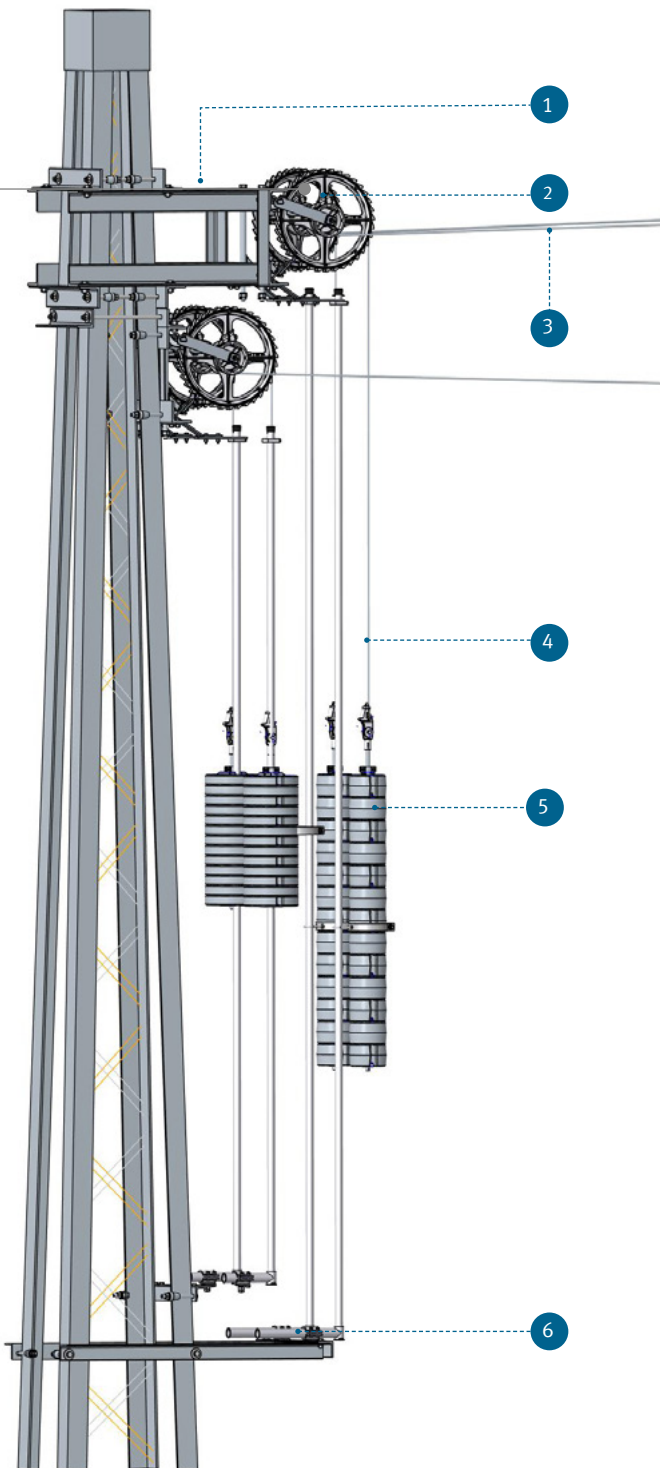
Attribute		3EGF001661	3EGF001674	3EGF006445	3EGF001669	3EGF006371
Nominal force	kN	20	30	30	30	30
Mass	kg	26	28	28	29	28
Ratio		1:3	1:3	1:3	1:3	1:3
Pantograph		Steel, hot-dip galvanised	A2	Steel, hot-dip galvanised	A2	Steel, hot-dip galvanised
Wired		Yes	No	No	No	No

TracFeed® NSV Radspanner

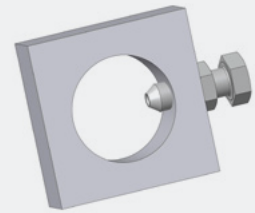


DESIGN AND OVERVIEW – BASIC COMPONENTS OF THE TracFeed® NSV TENSIONING WHEEL ASSEMBLY

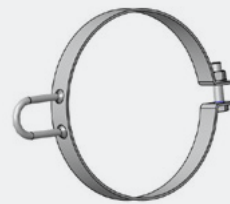
Rail Power Systems GmbH also supplies custom-fit and high-quality accessories



Weight plate
3EGF019503



Adjusting ring for weight
guide 3EGF001786



Guide clip
3EGF019185



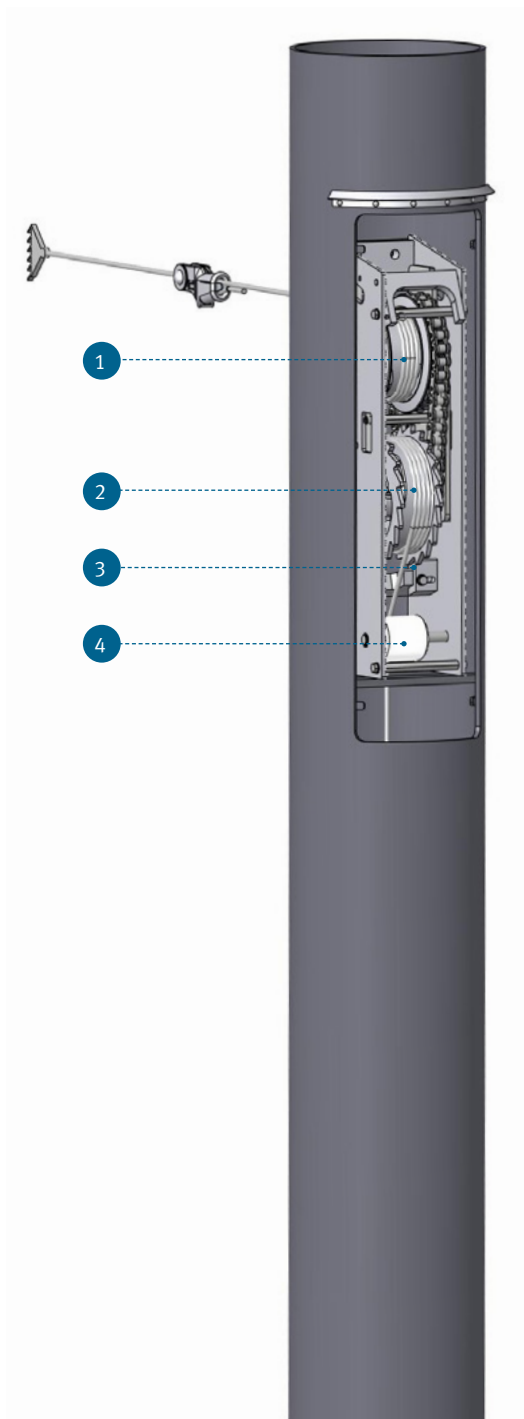
Balance weight set
3EGF019556



Tube holder for weight guide rod
3EGF003098

1. Fastening for tensioning wheel assembly
2. Tensioning wheel assembly
3. Tensioning wheel wire for contact wire and catenary wire
4. Tensioning wheel wire for balance weight set
5. Balance weight sets
6. Fastening for weight guide

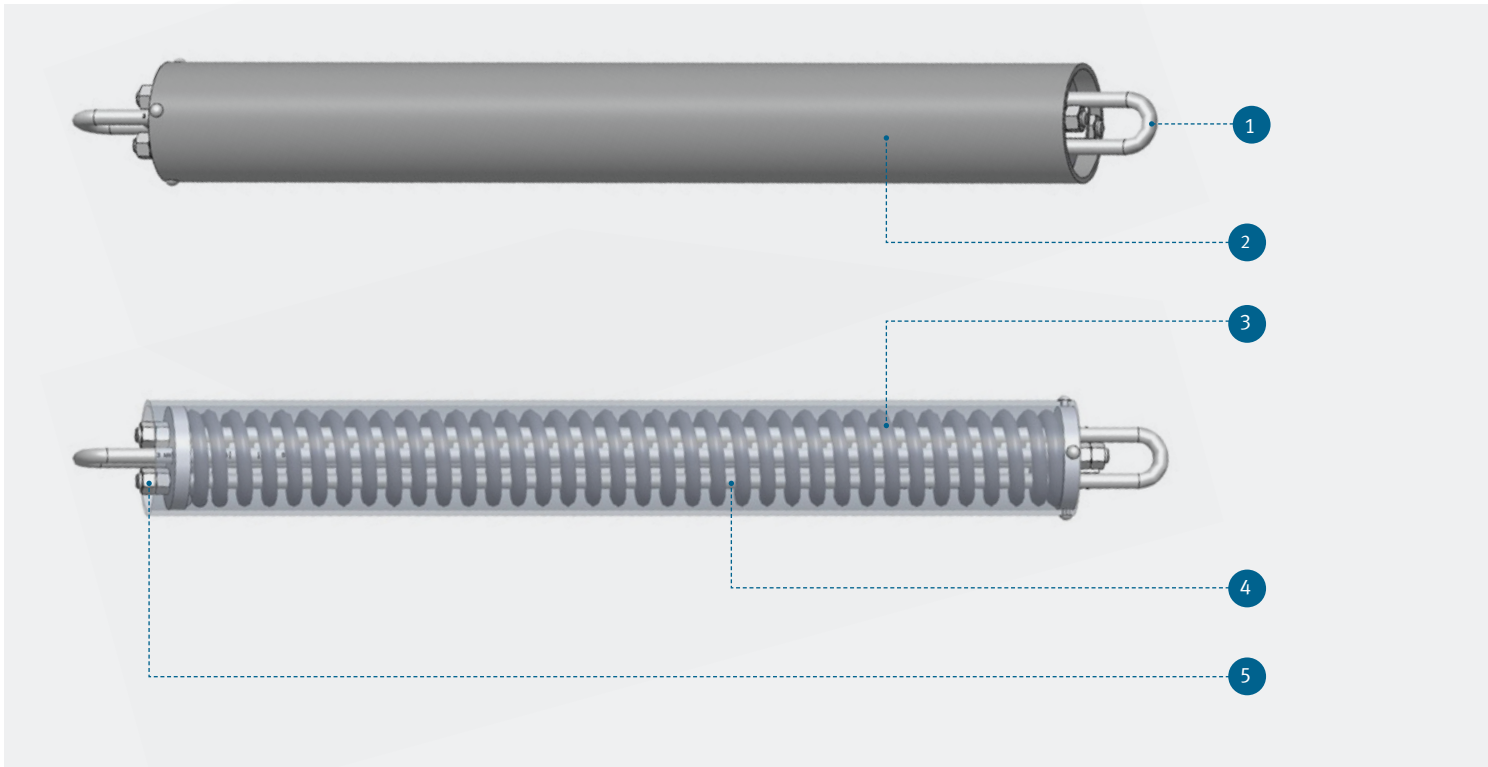
DESIGN AND OVERVIEW – BASIC COMPONENTS OF THE TracFeed® INTEGRATED TENSIONING WHEEL ASSEMBLY



1. Cable drum for contact wire/catenary wire
2. Cable drum for balance weight set
3. Detent and blocking device
4. Wire guiding pulley for balance weight set
5. Balance weight set



DESIGN AND OVERVIEW – BASIC COMPONENTS OF THE TracFeed® NSV SPRINGS



Spring	3EGF002272	3EGF006315	3EGF006367
Material	nrSt	nrSt	nrSt
Mass (kg)	8,5	3	5
Length (mm)	859	374	550
Stroke (mm)	135	50	100
Force (kN)	2-3	3	2-3

1. Clevis end
2. Tube
3. Spring
4. Clevises
5. Fastening nut

WITH PRECISION: ALWAYS ON THE MOVE – WE’VE GOT THE RIGHT CONTACT WIRE TO KEEP OUR CUSTOMERS MOVING

Rail Power Systems has been developing and producing TracFeed® contact line products in close collaboration with customers and partners for decades.

TracFeed® products are approved for use in numerous countries by system operators in intercity and local transport and have proved themselves over many years of use under wide-ranging conditions. You are also assured of some impressive advantages with our entire product portfolio.

The contact line components are suitable for standard solutions and for tailored, completely customer-specific operating concepts for local and intercity transport.

Whether you are purchasing clamps for ropes and wires, aluminium components for cantilevers, tensioning wheel assemblies or section insulators from Rail Power Systems: all our contact line elements offer you different advantages.

Your advantages:

- Long service life
- High reliability
- Low life-cycle costs
- Excellent quality
- Can be used under various climatic and operating conditions

Get in touch with us if you have complex technical questions about our products. We will also be happy to provide you with in-depth information and, on request, present our complete product range featuring all product lines for TracFeed® contact line components, such as TracFeed® ALU 1000, 2000, 3000, TracFeed® OSS overhead conductor rails and TracFeed® STS conductor rail systems.

Measurable increase in performance

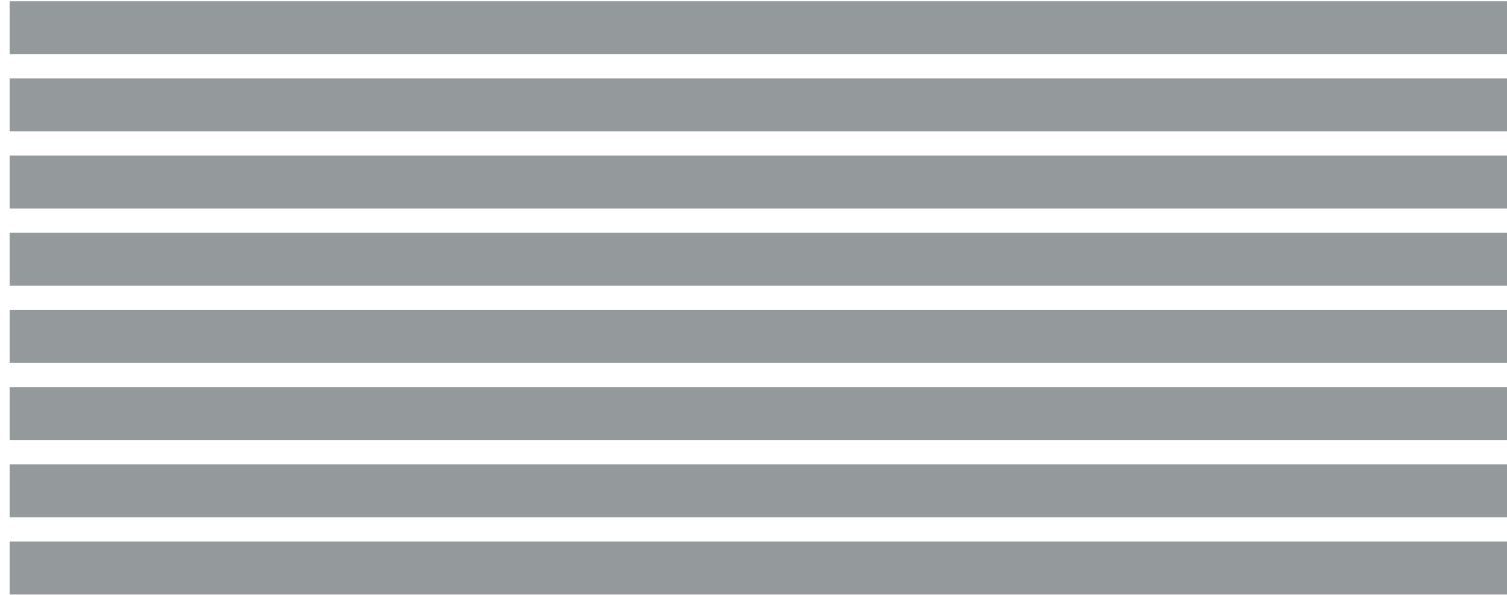


Quality: ISO 9001
Environment: ISO 14001
Energy: ISO 50001
Health: ISO 45001



Further brochures, data sheets, project reports, certificates, etc. are available here:
www.rail-ps.com/service/downloads





© 2022. All rights reserved by Rail Power Systems GmbH.

The specifications set out in this document apply to conventional applications. They do not represent performance limits. This means that divergent specifications may be attained in specific applications. The contractually agreed specifications alone shall apply. We reserve the right to effect technical modifications. TracFeed® is a registered trademark of Rail Power Systems GmbH.