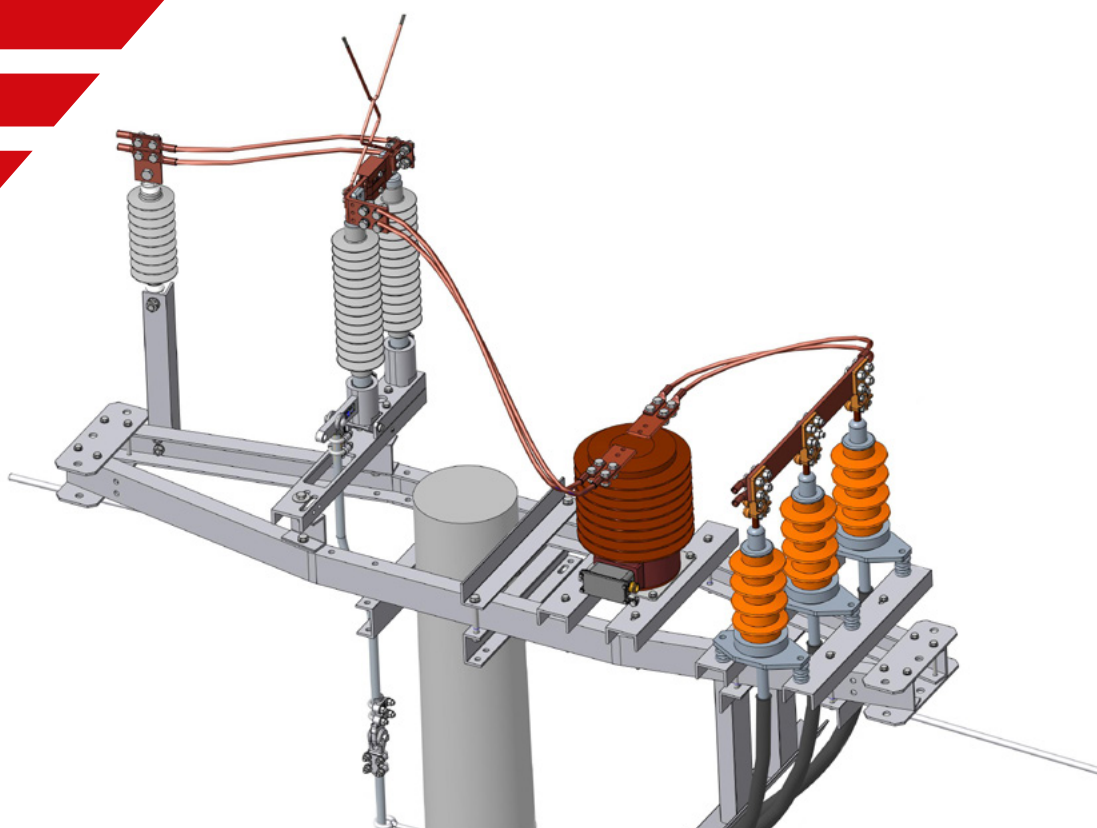


TracFeed® MTS

MAST DISCONNECTOR 15KV TO 25 KV AC

English



TracFeed® MTS MAST DISCONNECTOR

Rail Power Systems has been developing and producing TracFeed® contact line products in close collaboration with customers and partners for decades. TracFeed® products are approved for use in numerous countries by system operators in local and intercity transport and have proved themselves over many years of use under wide-ranging conditions.

Development of the mast disconnectors

The mast disconnector family has been revised and optimised due to new requirements and customer-specific specifications. Rail Power Systems GmbH has set itself the task of satisfying customer requirements for a low-maintenance, easy-care product group. Here, the focus is on innovative and rule-compliant technical implementation.

Special features of the earthing switches

The distinguishing feature of RPS earthing switches is that, in contrast to similar products, the sensor signal for successful earthing is queried directly in the contact. RPS earthing switches are thereby able to offer enhanced safety for a successfully performed earthing operation.

Assembly

The assembly of TracFeed® MTS mast disconnectors is carried out on traverses that are mounted on the head of the contact line pole. The pole itself usually protrudes above the height of the catenary.

With conventional designs, the switches can be operated via a shift linkage. Here, a remote motor drive (SFA) provides the required 200 mm stroke for actuation.



Modules

- Uniform basic design
- Individual adaption of basic profile – depending on the installation situation
- Use of other insulators, e.g. 3 kV deviating from standard variant 15/25 kV
- Retrofitting of the earth contact for the mast disconnector

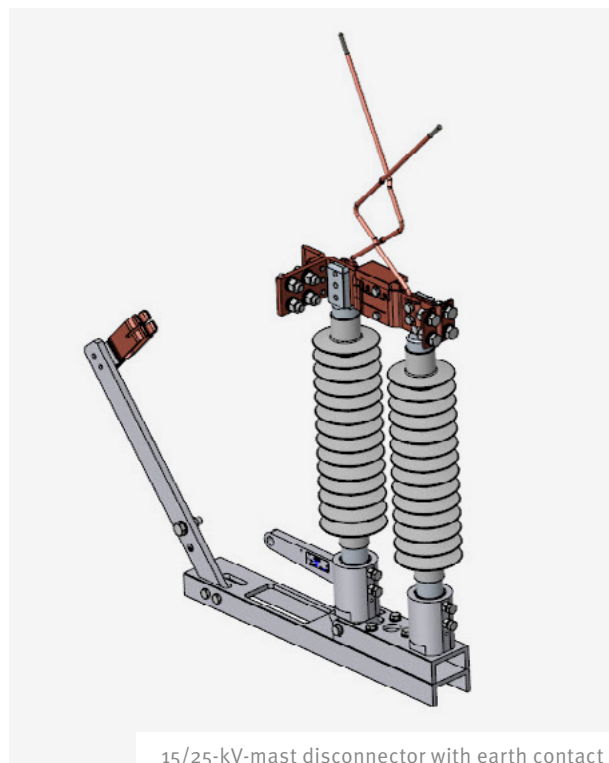
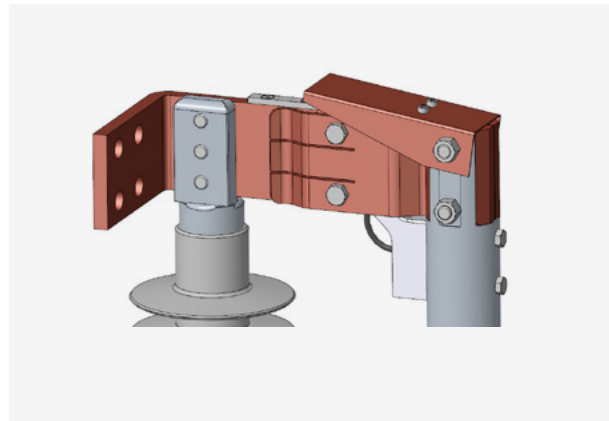
Special features

- Durability for a long service life: Designed and tested for at least 50 000 switching cycles
- Dirt- and water-repellent insulator
- Implementation in accordance with the provisions of the Birds Directive: reduced danger of short circuits caused by birds
- Insulator with increased creepage distance

Backward compatibility for use in existing systems

Model overview

Type	Material number
Mast disconnector	3EGF020664
Mast disconnector with earth contact	3EGF021021
Earthing switch	3EGF021020

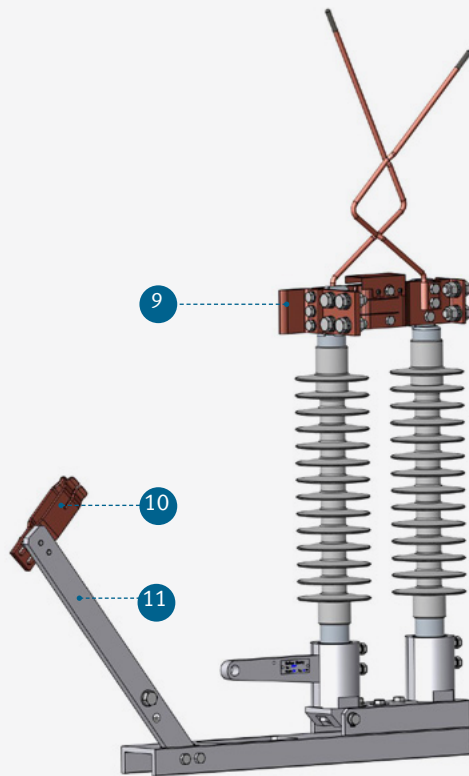


15/25-kV-mast disconnector with earth contact

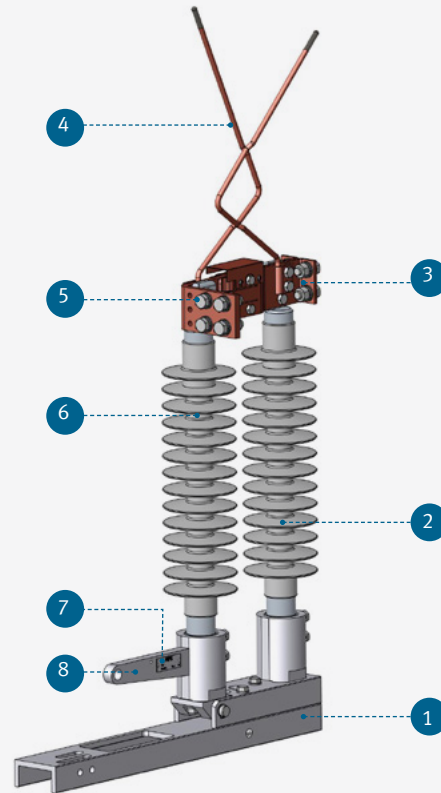


DESIGN AND OVERVIEW OF STANDARD COMPONENTS

TracFeed® MTS mast disconnecter line contact with composite insulators and main contacts



Modell with earth contact



Modell without earth contact

General view

- | | |
|---|---|
| 1. Base plate | 7. Plate |
| 2. Fixed switch area with composite insulator | 8. Swivel base |
| 3. Mating contact (with contact fuse) | 9. Contact blade with earth contact |
| 4. Arcing horns | 10. Earth contact |
| 5. Contact blade | 11. Connection point for the earthing cable |
| 6. Movable switch area with composite insulator | |

Quality and optimisation of the manufacturing process

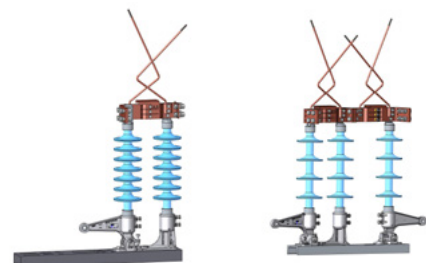
The switches listed are designed as per the DIN EN 50152-2 standard.

Switch disconnecter with earth contact

Order number		3EGF015853	3EGF013307	3EGF020664	3EGF014470
Rated voltage	kV AC	25	25	25	25
Insulators		Composite	Composite	Composite	Composite
Rated operating current	A	1700	1700	1700	1700
Creepage distance	mm	1300	915	1590	915
Rated short-time withstand current	kA	50	50	40	
Short-circuit current duration	s	1	1	1	
Mass	kg	38	35.2	31.6	50

Switch disconnecter without earth contact

Order number		3EGF015852	3EGF013306	3EGF021021	3EGF020720	3EGF014470
Rated voltage	kV AC	25	25	25	25	25
Insulators		Composite	Composite	Composite	Composite	Composite
Rated operating current	kA	1.7	1.7	1.6	1.7	1.7
Creepage distance	mm	1300	915	1590	1300	1300
Rated short-time withstand current	kA	50	50	40	50	50
Short-circuit current duration	s	1	1	1	1	1
Mass	kg	30.1	29.5	31.6	30.1	45



3EGF013306

3EGF014470
System toggle switch

Earthing switch up to 25 kV with running-in supervision

Order number		3EGF018093	3EGF021020
Rated voltage	kV AC	25	25
Insulators		Kunststoff	Kunststoff
Rated operating current	A	1700	1600
Creepage distance	mm	1300	1590
Rated short-time withstand current	kA	40	40
Short-circuit current duration	ms	1	1
Mass	kg	29.5	28.2



3EGF021020

Deployment in systems for automatic earthing of railway systems
(e.g. AEA/OLSP)



ASSEMBLY AND ACCESSORIES

Rail Power Systems also supplies custom-fit and high-quality accessories. These can be integrated in the contact line installations together with the switch disconnectors. The following extensions are available:



Shift linkage (on request)



Traverse for switch (on request)



Remote motor drive (SFA)



Manual drive (on request)



WITH PRECISION: ALWAYS ON THE MOVE – WE'VE GOT THE
RIGHT CONTACT WIRE TO KEEP OUR CUSTOMERS MOVING

Rail Power Systems has been developing and producing TracFeed® contact line products in close collaboration with customers and partners for decades.

TracFeed® products are approved for use in numerous countries by system operators in intercity and local transport and have proved themselves over many years of use under wide-ranging conditions. You are also assured of some impressive advantages with our entire product portfolio.

The contact line components are suitable for standard solutions and for tailored, completely customer-specific operating concepts for local and intercity transport.

Whether you are purchasing clamps for ropes and wires, aluminium components for cantilevers, tensioning wheel assemblies or section insulators from Rail Power Systems: all our contact line elements offer you different advantages.

Your advantages:

- Long service life
- High reliability
- Low life-cycle costs
- Excellent quality
- Can be used under various climatic and operating conditions

Get in touch with us if you have complex technical questions about our products. We will also be happy to provide you with in-depth information and, on request, present our complete product range featuring all product lines for TracFeed® contact line components, such as TracFeed® ALU 1000, 2000, 3000, TracFeed® OSS overhead conductor rails and TracFeed® STS conductor rail systems.

Measurable increase in performance

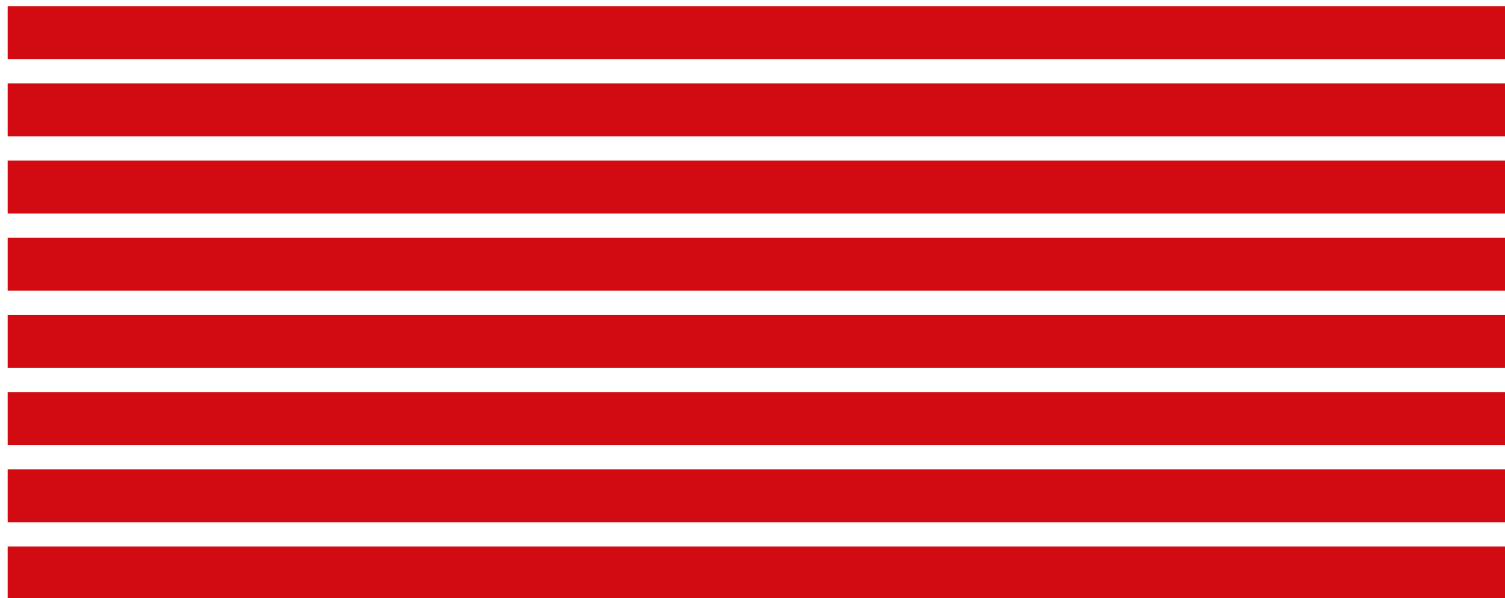


Quality: ISO 9001
Environment: ISO 14001
Energy: ISO 50001
Health: ISO 45001



Further brochures, data sheets, project reports, certificates, etc. are available here:
www.rail-ps.com/service/downloads





© 2022. All rights reserved by Rail Power Systems GmbH.

The specifications set out in this document apply to conventional applications. They do not represent performance limits. This means that divergent specifications may be attained in specific applications. The contractually agreed specifications alone shall apply. We reserve the right to effect technical modifications. TracFeed® is a registered trademark of Rail Power Systems GmbH.